

# Somfy Continuing Education Program

## How to Design Digital Buildings of the Future?

### REGISTERED PROVIDER PROGRAM SUMMARY

**Provider:**  
SOMFY SYSTEMS, INC.

### Accreditations:

ARCHITECTURAL



GREEN BUILDING



ENGINEERING



**Speaker:**

<b>AIA Provider #:</b>	40119176
<b>AIA Course #:</b>	401191760517
<b>GBCI Provider #:</b>	0010744782
<b>GBCI Course #:</b>	920019671
<b>RCEP Provider #:</b>	197617
<b>Length:</b>	1 hour
<b>AIA Credits:</b>	1 Learning Unit with HSW
<b>GBCI Credits:</b>	1 CE hour
<b>RCEP/ACEC Credits</b>	1 Professional Development Hour

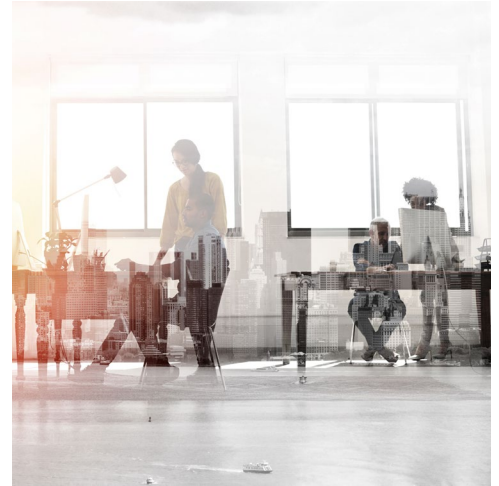


## Course Description:

This course will provide an understanding of innovative design trends including current market drivers, comparing high performance buildings and how to increase visual and thermal comfort by automating the balance of natural and artificial light. This course will build the connection between the influence of current design trends and advances in technology, on building performance using automated facades. We will discuss design strategies using power and data distribution to create higher performing buildings with increased functionality at a lower cost.

## Learning Objectives:

- 1: Understand how construction costs effect project planning and designs
- 2: Project planning to overcome main obstacles to creating smart buildings considering power distribution
- 3: Compare and contrast the layout of building systems with the integration of advanced power and control options
- 4: Identify the environmental benefits of using smart building technology



## Teaching Method:

The Course Facilitator determines in advance the specific learning objectives and the experience level of the audience. Using a PowerPoint presentation, the facilitator discusses the issues of interest and concern to the participants by showing relevant portions of the program. Feedback will be obtained by asking questions and posing situations to the group. At the end of the presentation, there will be an informal post test.

## A/V Requirements:

Power outlet and screen to present Powerpoint Presentation. Course Facilitator will provide the laptop, projector and course file.

## Target Audience:

Architects, Engineers, Construction Specification Specialists, Interior Designers, Building Owners, Facility Managers, Building Operators, and other design professionals in the commercial market. The experience level of the audience will be assessed so the facilitator can accommodate his/her remarks to meet the audience's needs.

## Contact Somfy to schedule a presentation at your firm

Somfy Systems, Inc.

Somfy Systems, Inc.  
North America Headquarters  
121 Herrod Blvd,  
Dayton, NJ 08810  
P: (800) 22-SOMFY (76639)  
NJ: (609) 395-1300  
F: (609) 395-1776

California  
15301 Barranca Pkwy  
Irvine, CA 92618-2201  
P: (800) 22-SOMFY (76639)  
F: (949) 727-3775

Florida  
1200 SW 35th Ave.  
Boynton Beach, FL 33426  
P: (800) 22-SOMFY (76639)  
F: (561) 995-7502

Somfy ULC  
Somfy Canada Division  
5178 Everest Drive,  
Mississauga, Ontario L4W2R4  
P: (800) 66-SOMFY (76639)  
CN: (905) 564-6446  
F: (905) 238-1491

Somfy SAS  
50 avenue du Nouveau Monde  
BP 152 - 74307 Cluses Cedex  
France  
T +33 (0)4 50 96 70 00  
F +33 (0)4 50 96 71 89